



NATIONAL STATISTICS
OFFICE OF MONGOLIA



Schweizerische Eidgenossenschaft
Confédération suisse
Confederazione Svizzera
Confederaziun svizra

Swiss Agency for Development
and Cooperation SDC

Швейцарын хөгжлийн агентлаг

ARTISANAL AND SCALL-SCALE MINERS' SURVEY SUMMARY 2016

ARTISANAL AND SMALL-SCALE MINERS' SURVEY - 2016

National Statistics Office of Mongolia and Sustainable Artisanal Mining project of Swiss Development & Cooperation Agency had jointly organized the Artisanal and small-scale miners' nationwide survey. Of the total 11,962 persons participated in the survey, 9,596 are directly and indirectly involved in artisanal mining activity and 2,366 are their family members.

With the survey, we aimed to assess the changes and progress in the ASM sector over the last five years, to identify the challenges and future trends, to update the baseline data of the previous survey and to make a comparative analysis.

KHANGAI REGION

Attended 2016 survey **1300** ASMs

Male | 71% or 920
Female | 29% or 380

Dominant age group

35-39 age | 17% or 226 person

Education

Primary & secondary | 69%

With occupation | 35% or 451

Insured **49% | 457**

Social insurance 234
Health Insurance 451

ULAANBAATAR

Attended 2016 survey **1216** ASMs

Male | 88% or 1070
Female | 12% or 146

Dominant age group

30-34 age | 20% or 244 person

Education

Primary & secondary | 75%

With occupation | 52% or 628

Insured **65% | 110**

Social insurance 83
Health Insurance 106

EASTERN REGION

Attended 2016 survey **171** ASMs

Male | 77% or 132
Female | 23% or 39

Dominant age group

40-44 age | 17% or 30 person

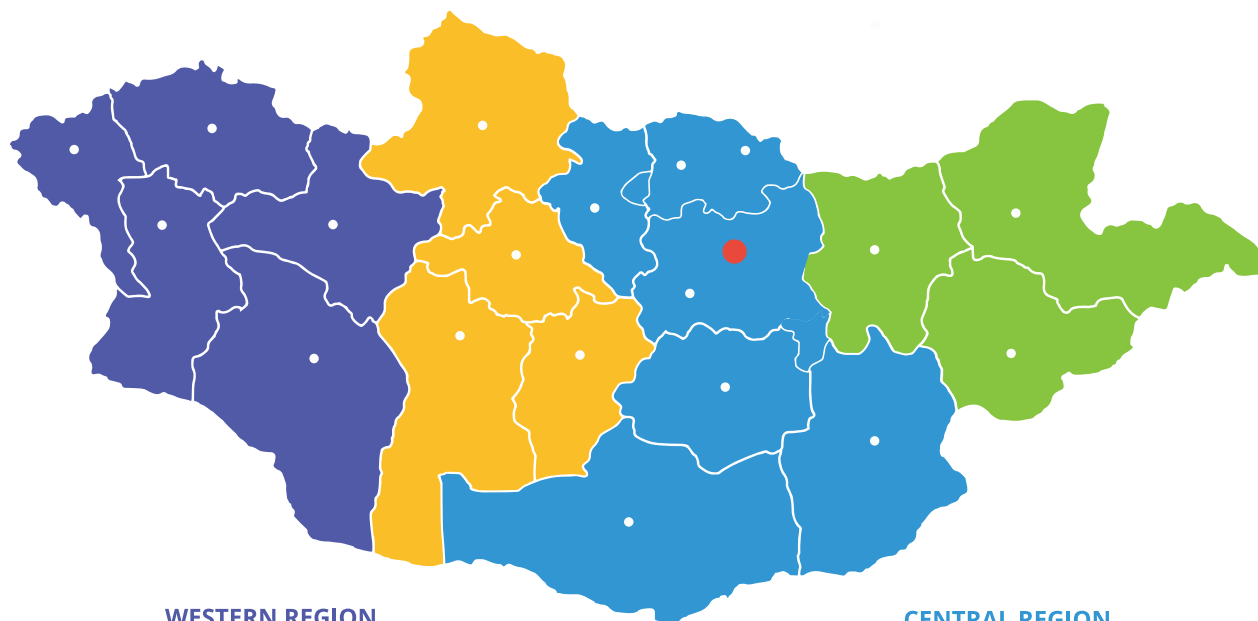
Education

Primary & secondary | 74%

With occupation | 24% or 41

Insured **40% | 65**

Social insurance 47
Health Insurance 61



WESTERN REGION

Attended 2016 survey **3597** ASMs

Male | 77% or 2740
Female | 23% or 857

Dominant age group

40-44 age | 17% or 610 person

Education

Primary & secondary | 71%

With occupation | 43% or 1547

Insured **52% | 1304**

Social insurance 573
Health Insurance 1263

CENTRAL REGION

Attended 2016 survey **3312** ASMs

Male | 73% or 2433
Female | 27% or 879

Dominant age group

35-39 age | 17% or 563 person

Education

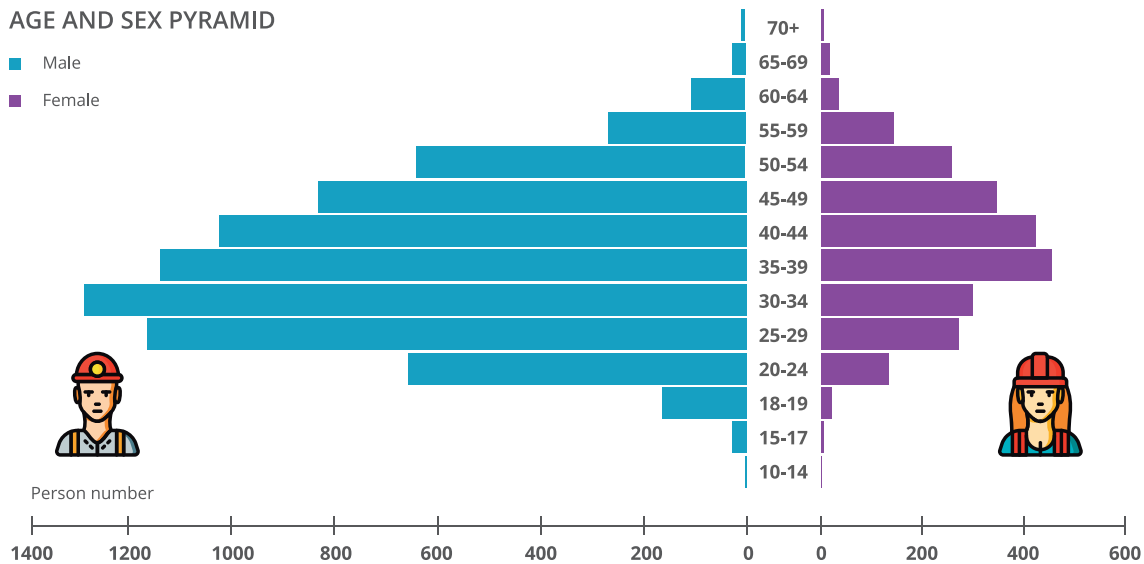
Primary & secondary | 75%

With occupation | 47% or 1553

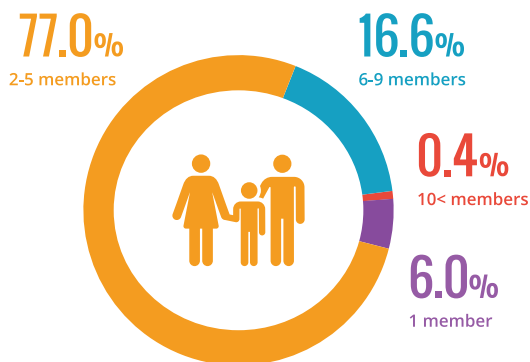
Insured **52% | 1145**

Social insurance 807
Health Insurance 1104

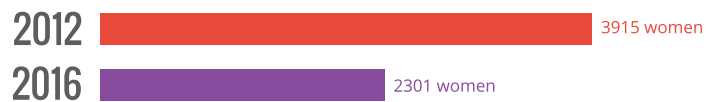
AGE AND SEX PYRAMID



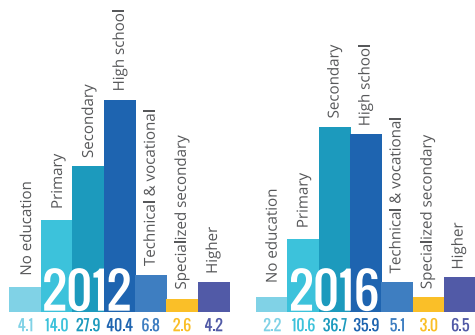
PARTICIPANT'S FAMILY STATUS



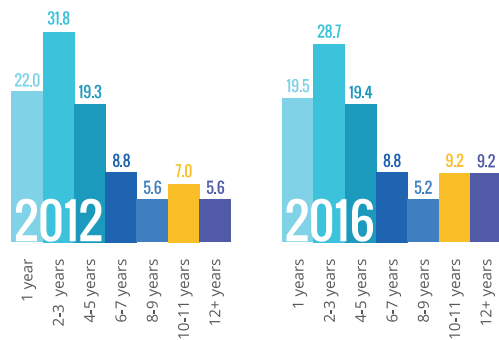
WOMEN IN ASM



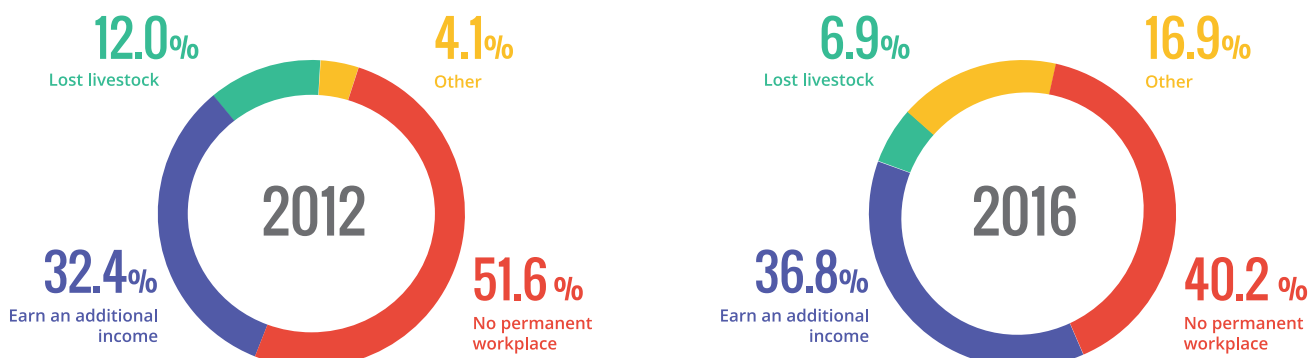
EDUCATION LEVEL



YEARS WORKED IN ASM



REASON FOR WORKING IN ASM



USAGE OF MOBILE PHONES

Don't use mobile phones **474**



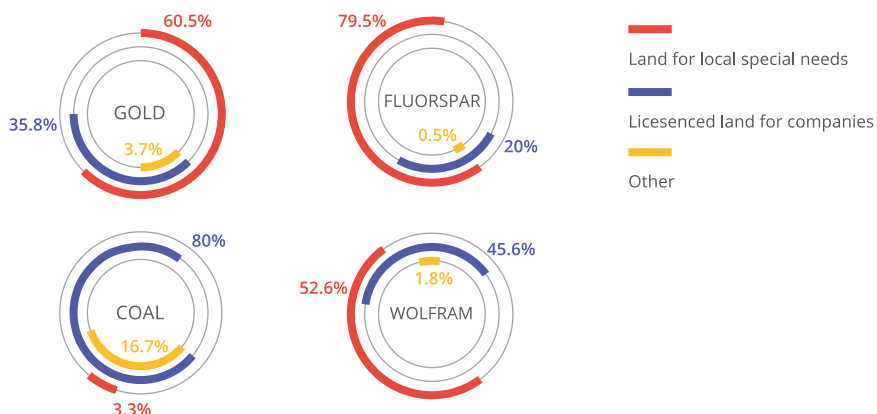
1656
Smart
26%

Use mobile phone **6474**



4818
Regular
74%

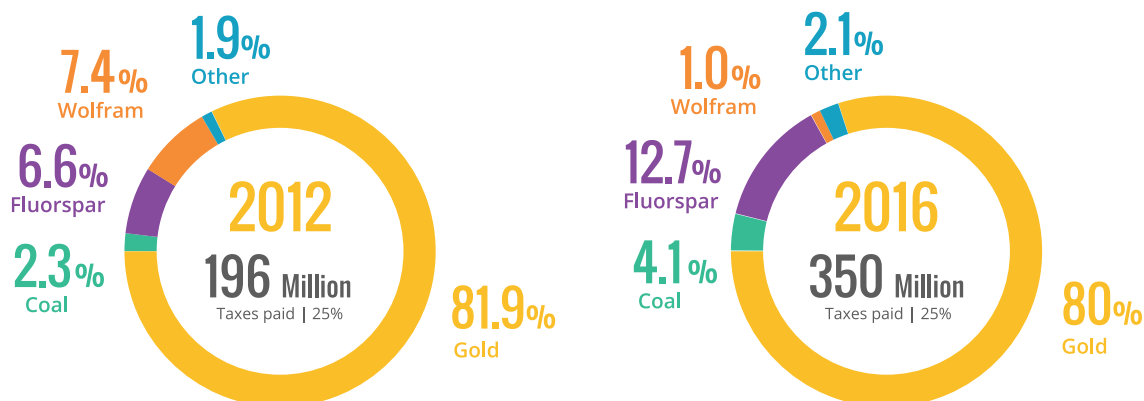
ASMRs WORK ON PERMITTED LAND



SIZE OF ASM LAND, DEGRADED LAND AND REHABILITATED LAND



TAX PAID BY ASMRs



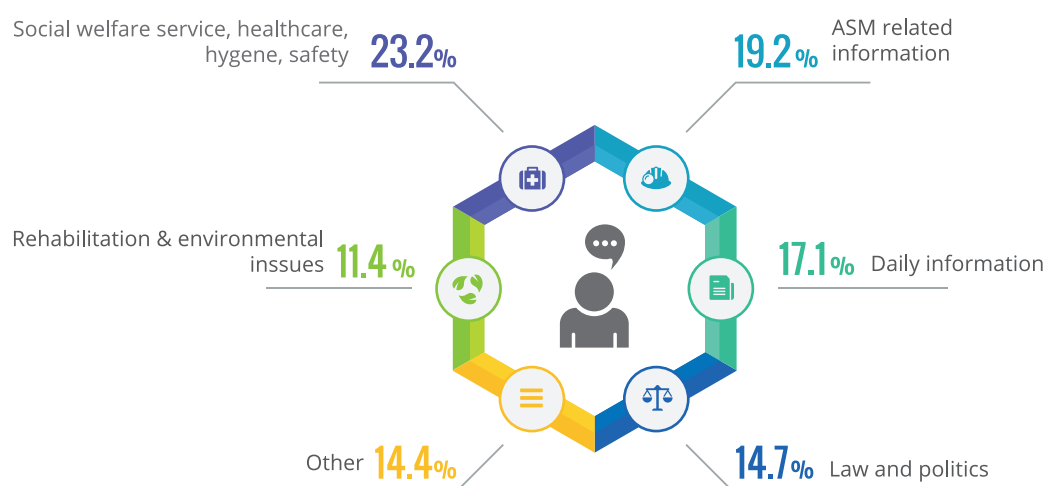
KNOWLEDGE ABOUT CHILD RIGHT



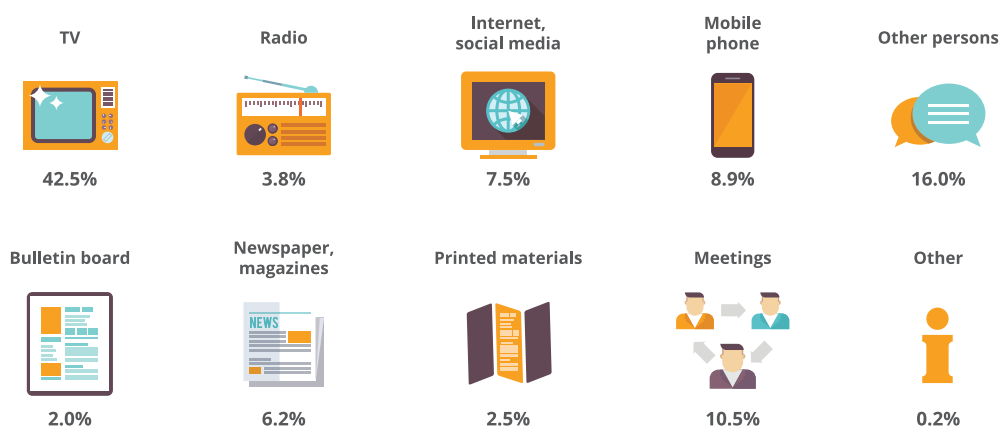
CHILDREN WORKING IN ASM



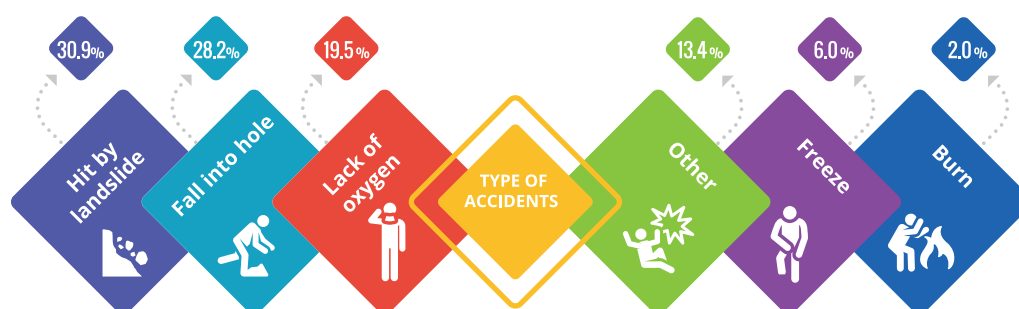
TYPES OF INFORMATION NEEDED



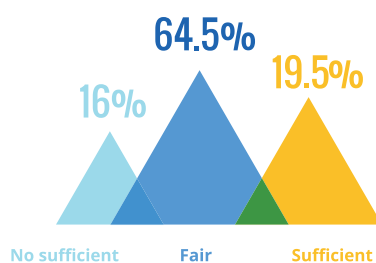
SOURCE OF INFORMATION



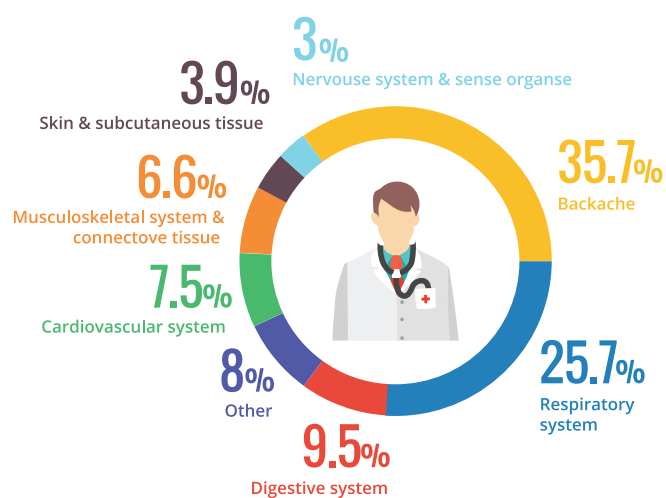
TYPE OF ACCIDENTS



KNOWLEDGE ON OCCUPATIONAL SAFETY AND HEALTH



COMMON TYPE OF DISEASE

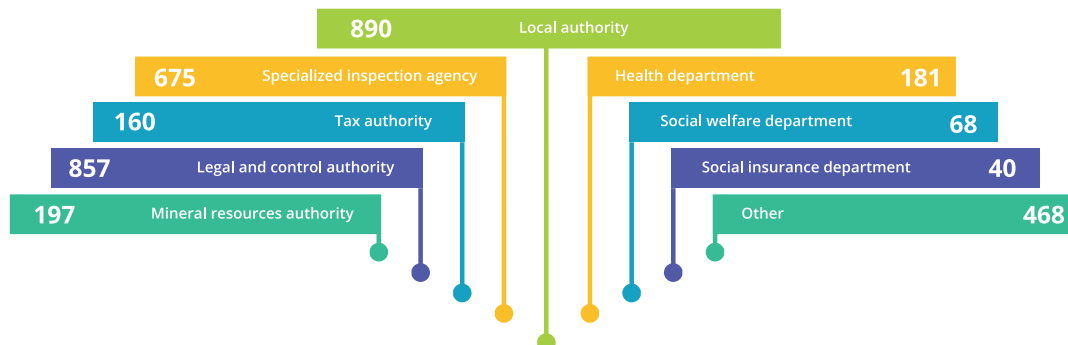


THE COMMON PROBLEMS AND CHALLENGES

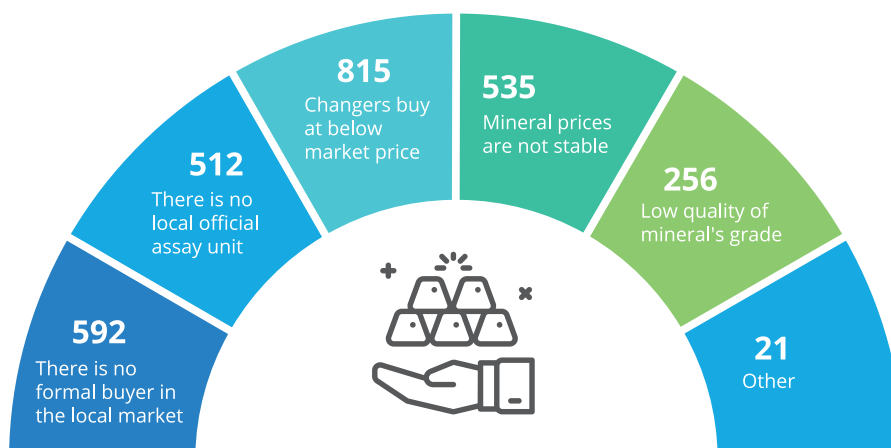


INSTITUTIONS DIFFICULT TO COMMUNICATE

Number of Institutions difficult to communicate | 3536



DIFFICULTIES TO TRADE MINERALS





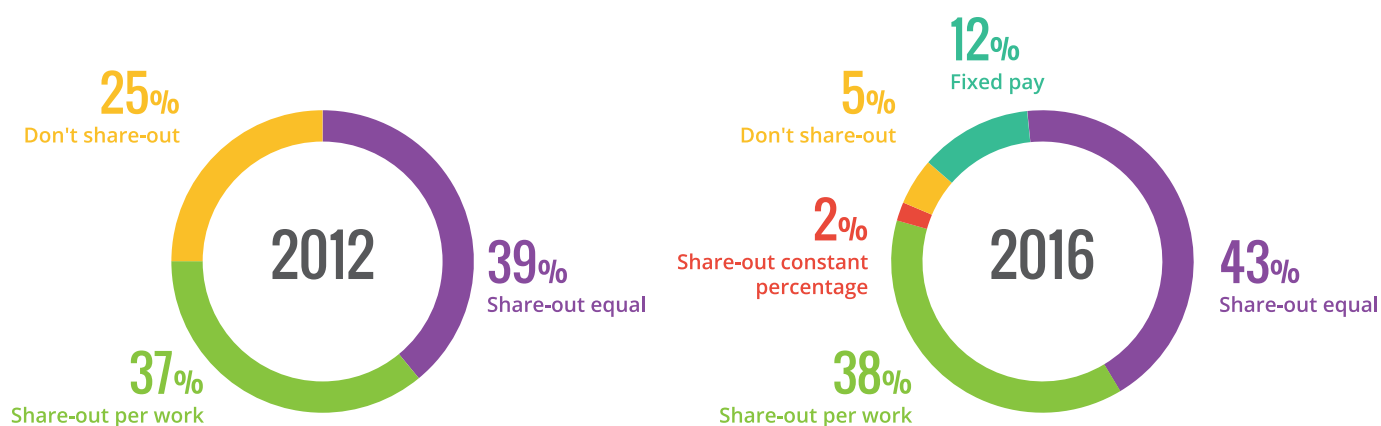
OCCUPATIONS OF PERSONS INVOLVED IN ASM

Total person	2012 year	Total	13375	Male	9460	Female	3915	2016 year	Total	9596	Male	7295	Female	2301
No profession	2012 year	Total	8197	Male	5684	Female	2513	2016 year	Total	5376	Male	4070	Female	1306

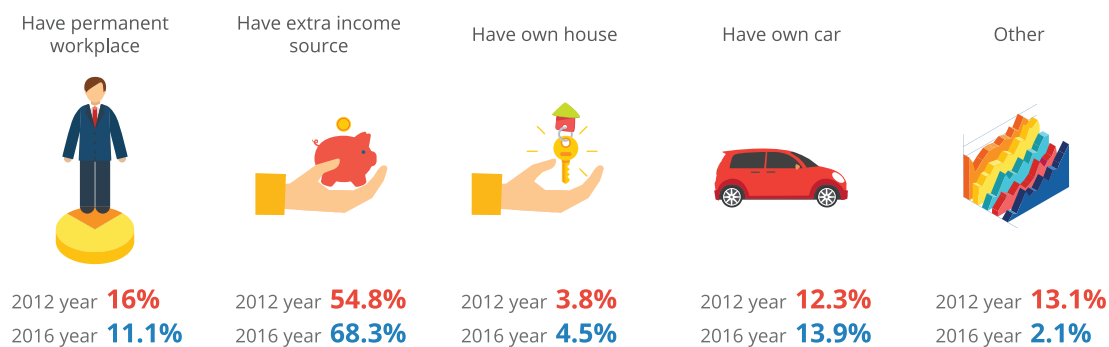
	Military service and occupation	2012	2016	Manager	2012	2016	Specialist	2012	2016	Technician, assistant, assistant specialist	2012	2016	Clerk and service worker	2012	2016
Male		3	7		10	35		832	694		86	166		45	36
Female		3	7		7	24		487	395		55	129		17	16
		-	-		3	11		345	299		31	37		28	20

	Trade and service worker	2012	2016	Qualified specialist in agriculture, forestry and fishing	2012	2016	Workers in production, construction, handicraft and related works and services	2012	2016	Operator and assembler of machineries and equipment	2012	2016	Casual work, occupation	2012	2016
Male		395	229		883	853		907	767		1961	1357		56	76
Female		46	28		579	622		654	646		1877	1305		51	53
		349	201		304	231		253	121		84	52		5	23

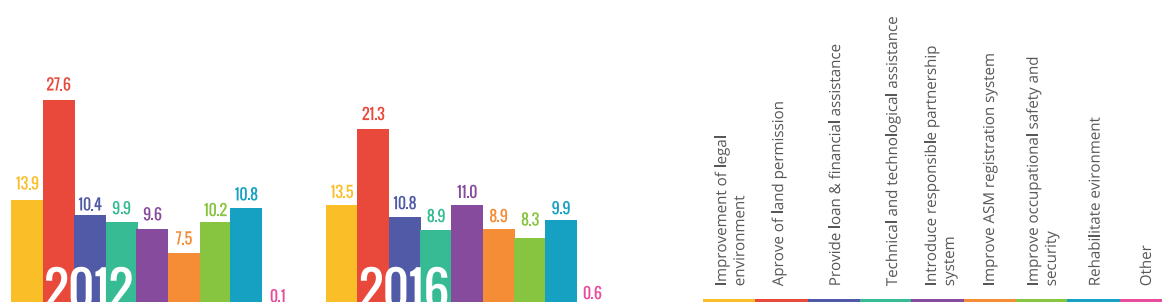
INCOME SHARE STATUS



CHANGES IN LIVELIHOOD



TYPE OF SUPPORT DESIRED TO RECEIVE FROM GOVERNMENT & NGOs





CONTACT US

Sustainable Artisanal Mining project

Sky Plaza, Business Center, A block,
Embassy street 9, Sukhbaatar district, 1st
khoroo Ulaanbaatar, Mongolia

☎ 976 11 328848

📠 976 11 322415

✉ info@sam.mn

🌐 www.sam.mn, www.asmhub.mn

📘 ASM Mongolia

🐦 ASM_Mongolia